

CÍNOVEC

LITHIUM MINING

22/08/2024, Altenberg



CONTENT

- 01 Cínovec - history of mining
- 02 Surface mining – tailing hill (Deponie)
- 03 Underground mining and its impacts
- 04 Conclusions



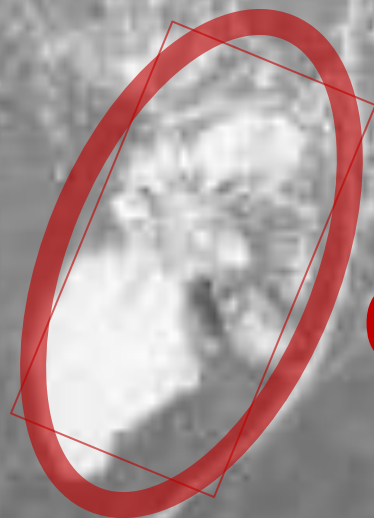
HISTORY

- A mining in Cínovec is a history (tin, silver, tungsten)
- The mining ended in 1978 (Cínovec I mine in the center of Cínovec, in a built-up area) and in 1990 (Cínovec II mine in the SE part of Cínovec)
- Now the mines are flooded, mine/pit water flows from Cínovec I to Germany
- The remaining buildings of the Cínovec mining premises were demolished in 2011

**THERE IS NO MINING FOR
MORE THAN 34 YEARS**



1953



Cínovec I

© MO ČR

1975

Cínovec I



MOER

MOER

Tailing Hill
(Deponie)



Cínovec II



Source: Ministry of Defense of the Czech Republic

2023

Hotel a restaurace
Krušnohorský Dvůr

Horský hotel Pomezí

Cínovec I



Plan
- Surface mine
(Deponie)

Cínovec II



Plan
- Underground
mine

SURFACE MINING — DEPONIE (TAILINGS DUMP/HILL)

- Directly in the built-up part of Cínovce
- All permissions completed already in 2017
- Mining company: Cínovecká Deponie, as (part of RSJ - Karel Janeček's investment group)
- Extraction of the entire former tailing hill/sand landfill



SURFACE MINING — DEPONIE (TAILINGS DUMP/HILL)

- Duration: 5-6 years
- Buildings: separation line and other mine buildings in the (south-east part of the mine area)
- Miners must meet a number of strict conditions (from EIA)
- Waiting for underground mining and/or processing to start



UNDERGROUND MINING

- Locality: Sedmihůrky (in the forrest, southern part of Cínovec)
- Area size: approx. 23 ha
- Main portal, operational buildings (dispatch, maintenance, substation, cable car/belt upper station, warehouses, wastewater treatment plant), administrative buildings, plant for the production of loading back into the mine, tailings dump



UNDERGROUND MINING

- Mining company: Geomet s.r.o. (100% owner=Severočeské doly a.s., ČEZ group)
- 2021 notification issued in EIA process
- for the next steps, the miners must submit expert studies (emissions, noise, water, seismic, etc.) – conditions from 1st step of EIA

Ownership structure of the mining company

GEOMET s.r.o.



Source: justice.cz (15.11.2023), cez.cz (19.6.2023)



UNDERGROUND MINING

LAUNCHING AND DURATION OF THE MINING

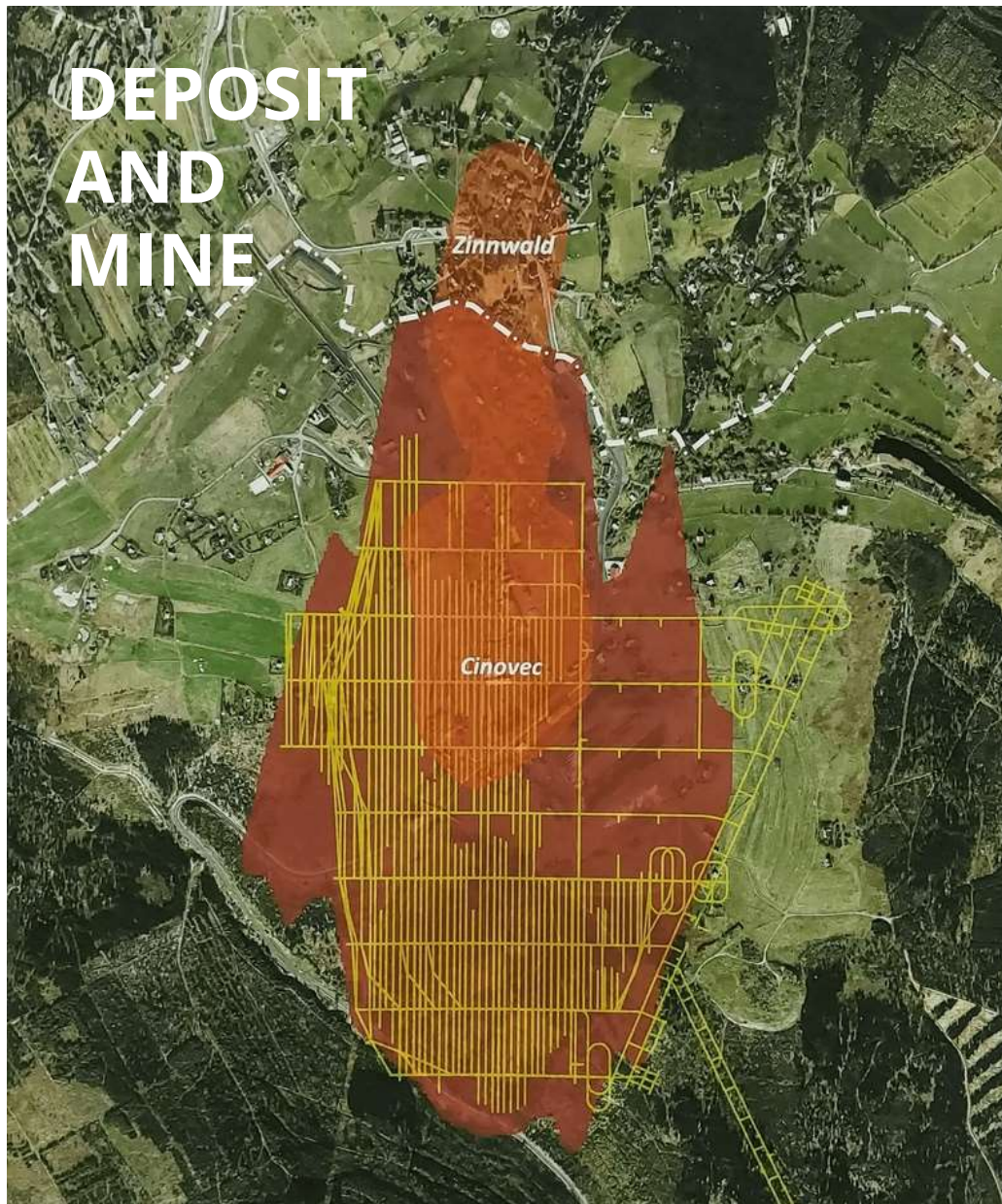
- 25 years (maximum time period allowed under by the EIA)
- The total duration of mining has not been published yet
- Launching: original plans - construction from 2025, start of mining 2026-27, full mining 2028-29
- Timetable has been revised recently - **THE NEXT DECISION WILL BE AT MID-2025**

LOCATION

- Although the surface visible mine area will be approx. 1,5 km far from build-up part of Cínovec, **mining work will take place under the populated area from the beginning of mining**
- it will be mined at a depth of around 150 m from the surface too



UNDERGROUND MINING



MAIN RISKS AND IMPACTS

- **Deforestation** - 23 ha for the mine in NATURA 2000 area + area for transport corridor
- **Water risk** – changes in the water regime, landscape and nature, impact on biodiversity
- **Air pollution** (mainly dust and radon) - handling, mine ventilation in the built-up part of Cínovce
- **Noise** - from the handling and transport of extracted material
- **Deformation of the surface due to mining and the use of explosives** - slumps, landslides, changes in the terrain, damages to buildings
- **Landscape change** – mine area, transport (ropecon /cable car 8 km, deforestation 7-9 ha



MAIN RISKS AND IMPACTS

- **Impact on protected areas**
- **Significant traffic increase** – heavy duty transport (construction, maintenance, accidents, cumulation with surface mining), passenger transport
- **Reduction of tourist potential**
- **Agency workers** - increase of socio-pathological problems in Dubí and its surroundings
- **Higher financial costs of Dubí** - investment in infrastructure, problem solving, reputational risks, limitation of tourist potential

NATURA 2000 (Východní Krušné hory, Východní Krušnohoří), Východní Krušné hory nature park, Cínovecký hřbet natural monument, Rašeliniště U jezera – Cínovecké rašeliniště nature reserve, plan: Krušné hory nature reserve





CURRENT STATE & CONCLUSIONS

Postponing of decision of ČEZ by a year (mid 2025)

Discussion on the profitability of mining (high CAPEX and OPEX)

No regional use-land permission

Market price of lithium plays a main role on the project

Surface mining does not start without a processing plant

GEOMET/ČEZ is not a trustworthy partner

Mining will bring only negatives to the locality and the region

The public must be informed fully and in time about the impacts of mining

THANK YOU

CINVALD z.s.

Cínovec, Dubí , Czechia

www.cinvald.cz, www.lithium-cinovec.eu



APPENDIX

PROCESSING TECHNOLOGY

RISK:

- a classic procedure, not a gentle and innovative method
- huge energy consumption , big water consumption
- large amount of chemicals (estimated as tens of thousands of tons per year)
 - sulfuric acid, phosphoric acid, sodium hydroxide, soda
- sulfur oxides are formed during roasting
- route of the transport corridor (approx. 8 km, through forest, built-up area)

